

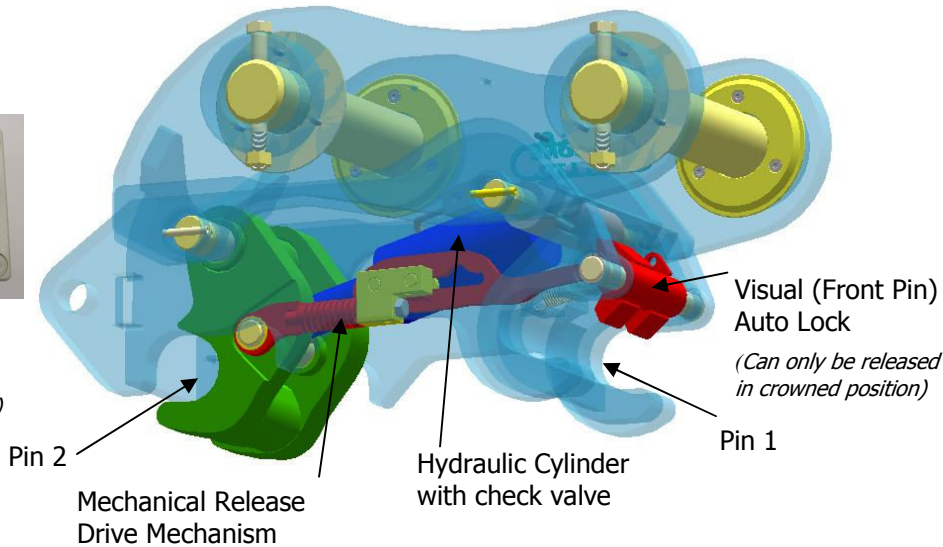
Auto Coupler

EN474-1 Compliant

In Cab Control Box



Stage 1 Stage 2
(2 Stage control protects against accidental release)



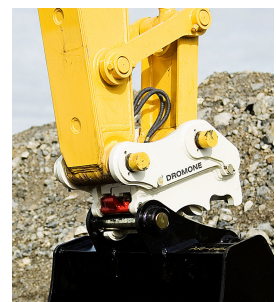
Coupler Safety Features

- Both front and rear attachment pins are hydraulically engaged by the coupler.
- Hydraulic check valve fitted as standard.
- If rear pin becomes disengaged due to coupler misuse the attachment is retained on the coupler by the front mechanical auto lock.
- Mechanical Auto Lock visible from cab as an additional safeguard and in compliance with EN474-1.
- Attachment can only be disengaged when the coupler and attachment is in the crowned position.
- In cab control box provides both visual & audible warnings to operator with the coupler in the release position. (Activated)
- Control Box prevents unintentional activation, two stages are required to activate coupler to release mode.
- Control Box has time out feature, deactivating the coupler.



Optional Additional Safety Features

- Secondary mechanical locking of rear pin available.
- Pick and place of attachments.
- Increased protection against bucket misfit.



Dromone Auto Coupler			
Standard Features		Optional Extras	
Hydraulic Cylinder Check Valve	✓	Locking Manual Safety Pin*	✓
Mechanical Lock Remains in Closed Position	✓	Accepts multi-pin spreads *	✓
Independent Spring Locking of Auto Lock	✓	Accepts multiple pin diameters - both pins *	✓
Mechanical Backup in case of Hydraulic Control system failure	✓	Backhoe Models and Front Shovelling *	✓
Mechanical Lock is visible from cab	✓	Pin Bosses built to machine specifications *	✓
In Cab Warning Light	✓		
In Cab buzzer	✓		
Time Dependent Release Button	✓		
Certified Lifting Eye	✓		
Necessary to crown coupler for safe release	✓		

* Features dependent on machine configuration